

Filter / Regulator – Miniature SB1

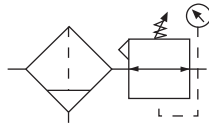
= "Most Popular"



SB1-02-LYS0



SB1-02-LYSS



Specifications

Flow Capacity*	Port Size	5 Micron
	1/4	12 SCFM
Bowl Capacity		1.0 Ounces
Filter Rating		5 Micron
Gauge Port		1/4 Inch
Port Threads		1/4 Inch
Pressure & Temperature Ratings –		
SB1-02-LYS0 –		300 PSIG Max (20.7 bar) 0°F to 150°F (-18°C to 66°C)
SB1-02-LYSS –		300 PSIG Max (20.7 bar) 0°F to 180°F (-18°C to 82°C)
Auto Pulse Drain –		10 to 175 PSIG (0.7 to 12 bar) 32°F to 150°F (0°C to 66°C)
Note: Air must be dry enough to avoid ice formation at temperatures below 32°F (0°C).		
Useful Retention **		0.4 Ounce
Weight		0.8 lb. (0.36 kg)

* Inlet pressure 100 PSIG (6.9 bar) and 75 PSIG (5.2 bar) no flow secondary setting and 25% pressure drop.

** Useful Retention refers to volume below the quiet zone baffle.

Features

- Stainless Steel Construction Handles Most Corrosive Environments
- Large Diaphragm to Valve Area Ratio for Precise Regulation and High Flow Capacity
- 1/8" Female Threaded Drain
- Meets NACE Specifications MR-01-75/ISO 15156.
- High Flow: 1/4" – 12 SCFM[§]

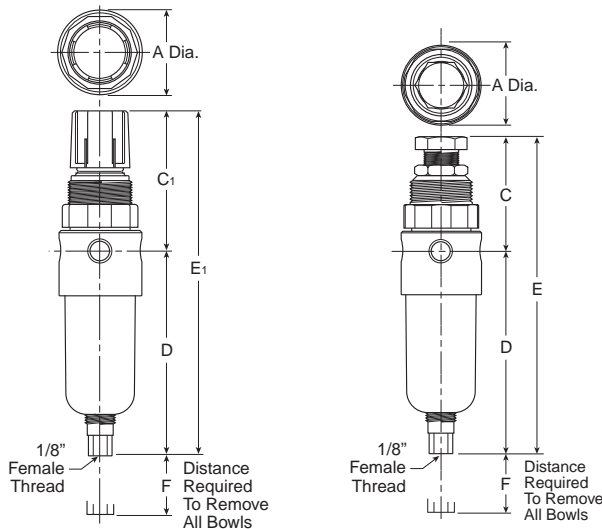
[§] SCFM = Standard cubic feet per minute at 100 PSIG inlet, 75 PSIG no flow secondary setting and 15 PSIG pressure drop.

Materials of Construction

Adjustment Mechanism / Springs	316 Stainless Steel
Body	316 Stainless Steel
Bonnet (SB1-02-LYS0)	Acetal
Bonnet (SB1-02-LYSS)	316 Stainless Steel
Bottom Plug	316 Stainless Steel
Knob (SB1-02-LYS0)	Polypropylene
Knob (SB1-02-LYSS)	316 Stainless Steel
Poppet	316 Stainless Steel
Seals	Fluorocarbon



Stainless Steel Products



Dimensions

Models	Inches (mm)	A	C	C ₁	D	E	E ₁	F
Miniature Unit SB1-02-XXXX		1.56 (40)	2.17 (55)	2.63 (67)	3.63 (92)	5.80 (147)	6.26 (159)	1.58 (40)

⚠ WARNING

**Product rupture can cause serious injury.
Do not connect regulator to bottled gas.
Do not exceed maximum primary pressure rating.**

CAUTION:

REGULATOR PRESSURE ADJUSTMENT – The working range of knob adjustment is designed to permit outlet pressures within their full range. Pressure adjustment beyond this range is also possible because the knob is not a limiting device. This is a common characteristic of most industrial regulators, and limiting devices may be obtained only by special design.

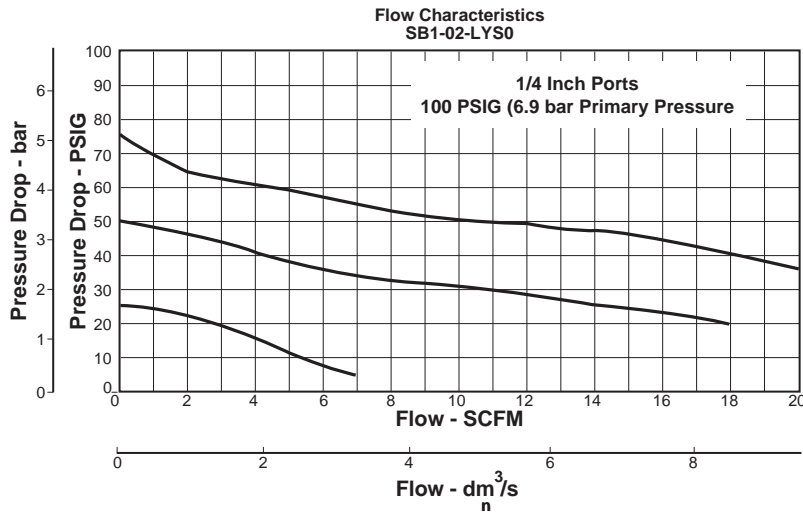
For best performance, regulated pressure should always be set by increasing the pressure up to the desired setting.

 = "Most Popular"

SB1 Regulator Kits & Accessories

- Bonnet Kit SB1-02-LYS0 (Knob Included)SRP-96-017
- Bonnet Kit SB1-02-LYSS (Knob Included)CKR354YSS
- Filter Element Kits –
 - Particulate (5 Micron) SRP-96-001
 - Particulate (20 Micron) SRP-96-002
- Gauge (Stainless) –
 - 160 PSIG (0 to 1100 kPa), 1-1/2" FaceK4515N14160SS
- Manual Twist Drain (New) SAP0581
- Manual Twist Drain (Old) SRP-96-008
- Mounting Bracket (Stainless)..... 161X57-SS
- Panel Mount Nut –
 - StainlessSRP-96-019
 - Plastic R05X51-P
- Pipe Nipple –
 - 1/4" 316 Stainless Steel SRP-96-009
- Service Kit –
 - RelievingSRP-96-015
 - Non-RelievingSRP-96-016
- Springs –
 - 0-25 PSIG RangeSPR-375-2-SS
 - 0-60 PSIG Range SPR-376-1-SS
 - 0-125 PSIG Range SPR-377-1-SS

Note: Order pressure gauge and panel mount nut separately.
Note: 1.25" dia. (32mm) hole required for panel mounting
 (order panel nut separately).



Ordering Information

Model Type	Port Size	0 to 125 PSIG (0 to 8.6 bar)	0 to 25 PSIG (0 to 1.7 bar)	0 to 60 PSIG (0 to 4.1 bar)
Relieving	1/4	SB1-02-LYS0	SB1-02-JYS0	SB1-02-KYS0
Non-Relieving	1/4	SB1-02- YYS0	SB1-02-VYS0	SB1-02-XYS0

Options - To order an option supplied with the unit model, add the appropriate coded suffix letter in the designated position of the model number.